



IML Easycore

Simco-Ion's patented IML charging technique is even more versatile with the IML Easycore 2 component resin for construction of IML cores.

Even very complex and small cores can be constructed with the 2 component resin.

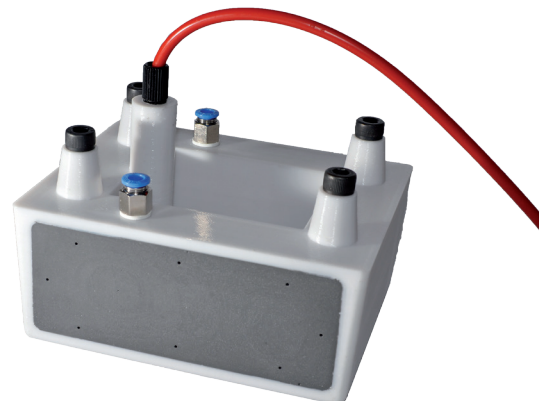
The resin is specially developed by Simco-Ion to have the perfect electrical and mechanical properties for use as an IML core.

All mechanical operations s.a. drilling, grinding, milling etc are possible to make the core to the perfect shape and size.

The IML Easycore comes in duo-packs consisting of the resin and the correct amount of hardener. Package sizes of 250 g are available.



IML Easycore 2 component resin



Example core made with Easycore

Simco-Ion Netherlands

Postbus 71
Lochem, The Netherlands NL-7240 AB
Tel: +31 (0)573 288333
Fax: +31 (0)573 288380
general@simco-ion.nl
www.simco-ion.nl

Technical specifications

Pot life 150g	20-40 minutes		
Gel time 150g mass @25 °C	40-80 minutes		
	Minimum cure	Full cure	
Cure schedule	24 hours @ 20°C	1 week @ 20°C	
Cure schedule	2 hours @ 60°C	4 hours @ 60°C	
Cure schedule	1 hours @ 80°C	2 hours @ 80°C	
Flame retardant	Yes		
Shore A hardness	78		
Electric strength	16 kV/mm		
Property	Resin	Hardener	Mixed
Specific Gravity g/ml	1,55	1,24	1,52
Viscosity m.Pa.s @ 25°C	4200	200	2400



Example product realisation